

# MONTHLY MEMBERSHIP PROGRESS REPORT

LOCATION TEXAS

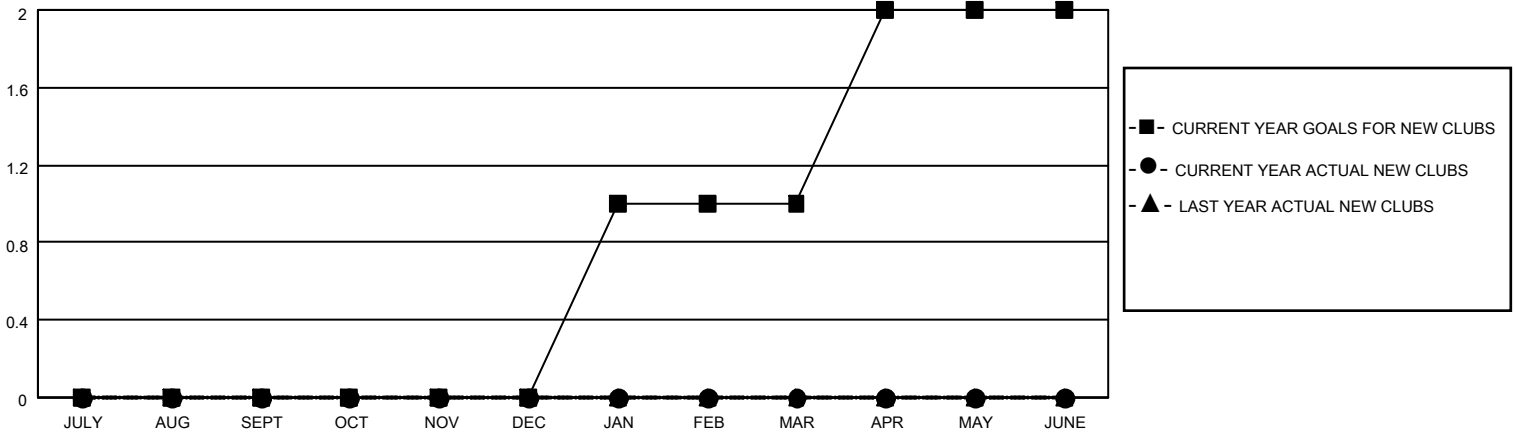
District 2 S5

Results as of: 2/28/2021

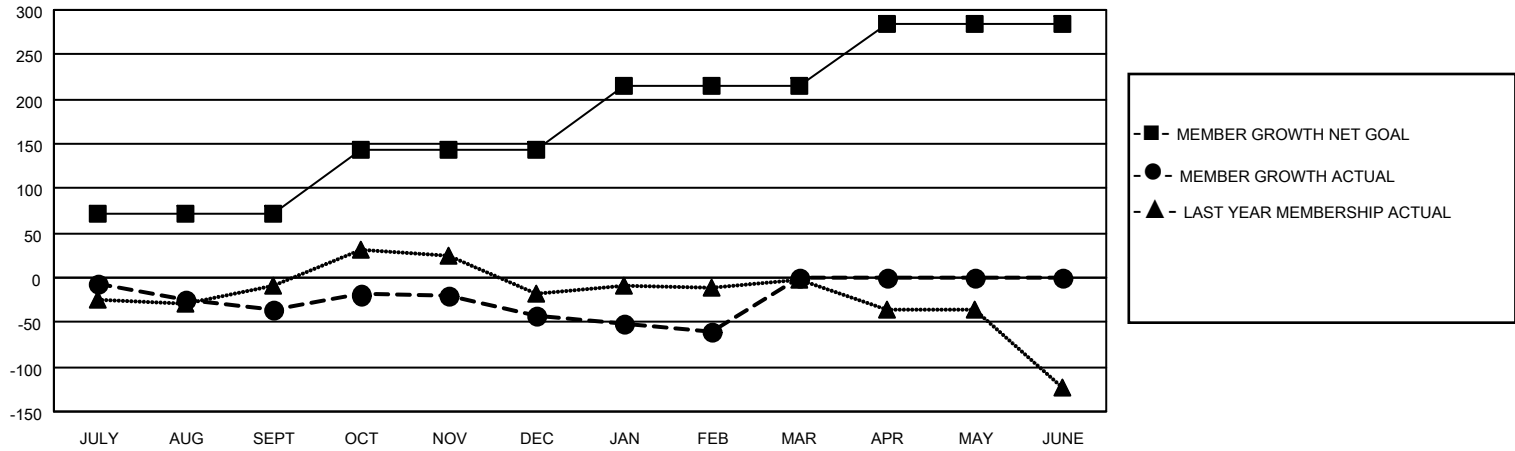
Clubs			
RESULTS FOR 2020-2021			
QUARTER	NEW CLUB GOAL	NEW CLUBS	DROPPED CLUBS
JULY/AUG/SEPT	0	0	1
OCT/NOV/DEC	0	0	0
JAN/FEB/MAR	1	0	0
APR/MAY/JUNE	1	0	0

Members			
RESULTS FOR 2020-2021			
QUARTER	MEMBER GROWTH NET GOAL	MEMBER GROWTH ACTUAL	DROPPED MEMBERS ACTUAL (including transfers)
JULY/AUG/SEPT	72	34	65
OCT/NOV/DEC	71	58	60
JAN/FEB/MAR	71	15	32
APR/MAY/JUNE	71	0	0

**GOALS AND ACTUAL NEW CLUBS CUMULATIVE**



**GOALS AND ACTUAL MEMBERS CUMULATIVE**



**DROPPED CLUBS: 1**

**31 CLUBS OF 61 ADDED 1 OR MORE NEW MEMBERS**

**GENDER DISTRIBUTION**

MALE 1,425 (62.12%)  
FEMALE 869 (37.88%)

**DROPPED MEMBERS**

[CLICK HERE FOR CUMULATIVE MEMBERSHIP DATA](#)

DECEASED	13
CLUB CANCELLED	0
OTHER	144
<b>TOTAL</b>	<b>157</b>

TOTAL FAMILY UNIT MEMBERS	394
FAMILY MEMBERS PAYING HALF DUES	200